

ECO-Matic

Best Value Trolley Range

Ergonomically Designed
Sustainably Engineered
Built to Last



Ergonomically designed, sustainably engineered
and built to last...

The best value cleaning system on the market.



Numatic

ECO-Matic

Raising Cleaning Standards and Productivity

Raising cleaning standards and productivity with a complete range of janitorial solutions and mopping systems to suit all environments.

- ✓ Best value cleaning system
- ✓ 100% Structofoam construction
- ✓ Engineered from the highest quality recycled plastic using environmentally sustainable ReFlo Technology
- ✓ Industry colour-coding for effective infection control
- ✓ Assembly in under 15 minutes
- ✓ Compact and easy to store design

Hospitality



Healthcare



Education



Retail



ECO-Matic

Product Features

Engineered from the highest quality recycled plastic using environmentally sustainable ReFlo Technology, the ECO-Matic range benefits from 100% Structofoam construction, making it tough, easy to clean and built to last.

Attention to detail and practical engineering ensure complete customer satisfaction in operation, versatility and convenience.



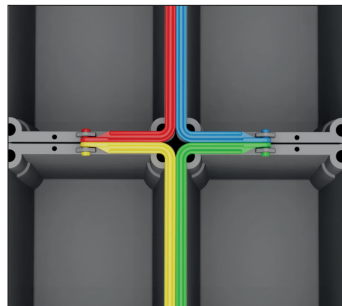
On-board Waste Facility
Convenient, fully-lidded 120L waste facility; right there when you need it.



Buffer Kit
Non-marking rotating buffers for extra wall and door protection.



Shelf Storage
Open shelf storage for easy access to all your cleaning equipment and supplies on the move.



Industry Colour-coding
Industry colour-coding for effective infection control.



Drawer Storage
Enclosed drawer storage to keep supplies tidy and out of sight.



Security Options
Peace of mind in public areas with optional security features.



Twin Waste Option
Choose between 120L or 2 x 70L waste options.



Optional Floor Sign
Compact and easy to store design.



EM6 with Kit SRK22 and Optional Wet Floor Sign.
Consumables for illustration purposes only.

EM1 with Kit SRK14 and SRK21.
Consumables for illustration purposes only.

EM3 with Kit SRK16 / SRK16 and Optional Wet Floor Sign.
Consumables for illustration purposes only.



Following extensive research and testing, we have introduced ReFlo Technology to our VersaCare range.

ReFlo Technology uses the highest quality recycled plastic within our manufacturing processes, delivering the same Numatic reliability, durability and quality as always.

Providing a tough Structofoam construction, ReFlo Technology ensures our products are both sustainably engineered and built to last.



Quick and Easy Assembly

Get straight to business; each model can be quickly and easily assembled in less than 15 minutes.

Designed for enhanced usability, productivity and simplicity, ECO-Matic offers a choice of 6 models to suit any cleaning task or environment.

EM1 / EM2 Compact and Convenient



- EM1**
- Waste 120L / 2 x 70L
 - Shelf Storage
 - Castors: 4 x 100mm
 - 4 x Kit Options: SRK14 / 20 / 21 / 22
 - Optional SprayMop
 - Wall and Door Protection
 - 545x900x1000mm (WxLxH)



- EM2**
- Waste 120L / 2 x 70L
 - 2 x Deep Storage Drawers
 - Castors: 4 x 100mm
 - 4 x Kit Options: SRK14 / 20 / 21 / 22
 - Optional SprayMop
 - Optional Lockable Drawers
 - Wall and Door Protection
 - 545x900x1000mm (WxLxH)

KIT	PART No.	EM1	EM2	EM3	EM4	EM5	EM6
SRK14	910439	●	●			●	
SRK15	910440			●		●	
SRK16	910442			●		●	
SRK16K	910443			●		●	
SRK19	910843			●		●	
SRK20	910758	●	●	●	●	●	●
SRK21	910898	●	●	●	●	●	●
SRK22	911401	●	●	●	●	●	●

EM3 / EM4 Mid-size Versatility



- EM3**
- Waste 120L / 2 x 70L
 - Shelf Storage
 - Castors: 4 x 100mm
 - 6 x Kit Options: SRK15 / 16 / 19 / 20 / 21 / 22
 - Optional SprayMop
 - Wall and Door Protection
 - 545x1160x1000mm (WxLxH)



- EM4**
- Waste 2 x 120L / 4 x 70L
 - Shelf Storage
 - Castors: 4 x 100mm
 - 3 x Kit Options: SRK20 / 21 / 22
 - Wall and Door Protection
 - 545x1230x1000mm (WxLxH)

EM5 / EM6 Maximum Storage



- EM5**
- Waste 120L / 2 x 70L
 - 2 x Deep Storage Drawers
 - Castors: 4 x 100mm
 - 6 x Kit Options: SRK15 / 16 / 19 / 20 / 21 / 22
 - Optional Lockable Drawers
 - Wall and Door Protection
 - 545x1160x1000mm (WxLxH)



- EM6**
- Waste 2 x 120L / 4 x 70L
 - 2 x Deep Storage Drawers
 - Castors: 4 x 100mm
 - 3 x Kit Options: SRK20 / 21 / 22
 - Optional Lockable Drawers
 - Wall and Door Protection
 - 545x1230x1000mm (WxLxH)

EM1-TM / EM2-TM Compact and Convenient

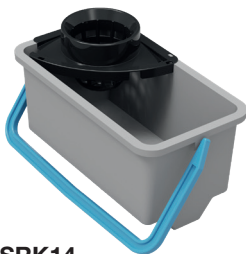


- EM1-TM** PN: 913343
- All the benefits of the EM1 with the following extras included:
- DTK9 Twist Mop Kit C/W 1 x Bactiguard Mop
 - Kit SRK14 1 x 18L Blue Handle Bucket, Grey C/W Dolly Mop Basket
 - Kit SRK22 2 x 10L Buckets, Grey 10L Bucket Handle, Red/Blue



- EM2-TM** PN: 913355
- All the benefits of the EM2 with the following extras included:
- DTK9 Twist Mop Kit C/W 1 x Bactiguard Mop
 - Kit SRK14 1 x 18L Blue Handle Bucket, Grey C/W Dolly Mop Basket
 - Kit SRK22 2 x 10L Buckets, Grey 10L Bucket Handle, Red/Blue

Mop Kits and Accessories



- KIT SRK14**
- 1 x 18L Blue Handle Bucket, Grey C/W Dolly Mop Basket
Used on: EM1 / EM2
PN: 910439



- KIT SRK15**
- 1 x 34L Blue Handle Bucket, Grey C/W Dolly Mop Basket
Used on: EM3 / EM5
PN: 910440



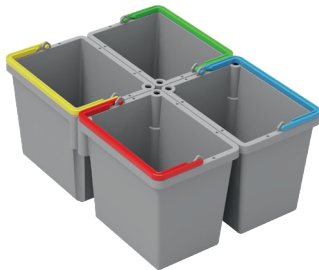
- KIT SRK16 / SRK16K**
- Vertical Press available with Foam Insert for Flat Mops or without
Foam Insert for Kentucky Mops
1 x 17L Red Handle Bucket, Grey
1 x 17L Blue Handle Bucket, Grey
Used on: EM3 / EM5
PN: 910442 with Foam Insert
PN: 910443 without Foam Insert



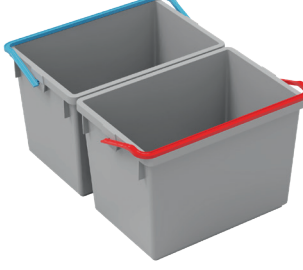
- KIT SRK19 Bag Frame Kit**
- 1 x ReFlo Bag Frame with Fixing Screws
1 x ReFlo Bag Securing Frame
1 x Grey Lid
C/W Colour-coded Discs
Used on: EM3 / EM5
PN: 910843



- KIT SRK20**
- Rear Wheel Assembly
Used on: EM1 / 2 / 3 / 4 / 5 / 6
PN: 910758



- KIT SRK21**
- 4 x 5L Swing Buckets
5L Swing Bucket Handle, Red / Blue / Green / Yellow
Used on: EM1 / 2 / 3 / 4 / 5 / 6
PN: 910898



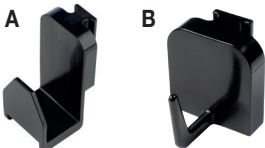
- KIT SRK22**
- 2 x 10L Buckets, Grey
10L Bucket Handle, Red / Blue
Used on: EM1 / 2 / 3 / 4 / 5 / 6
PN: 911401



- Wet Floor Sign**
- Wet Floor Sign Assembly, Yellow, English
Used on: EM1 / 2 / 3 / 4 / 5 / 6
PN: 901457



- Mop Clip**
- Mopstick Clip (x1), ReFlo Black
PN: 629874
Mopstick Clip (x10), ReFlo Black
PN: 629883



- Large T-Slot Hook, Small T-Slot Hook**
- Large T-Slot Hook (x1) A - PN: 911936
Large T-Slot Hook (x10) A - PN: 912547
Small T-Slot Hook (x1) B - PN: 915171
Small T-Slot Hook (x10) B - PN: 915325



- ECO-Matic Bag Splitter Kit**
- 1 x Bag Splitter with Fixing Screws for Dual Waste
1 x Bag Trapper Extrusion
C/W Roll of 70L Waste Bags
C/W Colour-coded Discs
Used on: EM1 / 2 / 3 / 4 / 5 / 6
PN: 910840



- Mop Support Kit**
- 1 x Mop Support for on-Board Mop Storage
Used on: EM1 / 2 / 3 / 4 / 5 / 6
PN: 915321



- Zipped Laundry Bag**
- 1 x Zipped Laundry Bag
Used on: EM1 / 2 / 3 / 4 / 5 / 6
PN: 909369

Head Office
Numatic International Limited
Chard, Somerset TA20 2GB UNITED KINGDOM

Tel: 01460 68600 numatic.com

Numatic International S.A.S
13/17 rue du Valengelier
EAE la Tuilerie, 77500 Chelles
FRANCE

Tel: 01 64 72 61 61
numatic.fr

**Numatic International
Schweiz AG.**
Sihlbruggstrasse 3A
6340 Baar
SCHWEIZ

Tel: 041 768 07 60
numatic.ch

Numatic International SLU
La Forja, 41, 08840
Viladecans, Barcelona
SPAIN

Tel: 34 936 472 222
numatic.es

Numatic International (Pty.) Ltd.
16th & Pharmaceutical Roads
Midrand, Gauteng, S.A. 1685
SOUTH AFRICA

Tel: 0861 686 284
numatic.co.za

Numatic International ULDA
Rua da Boa Viagem, 177
4470 - 210 Moreira Maia
PORTUGAL

Tel: 351 220 047 700
numatic.pt

Numatic International Italy SRL
Via Luigi Galvani, 2
Z.I. Talponedo
33080 Porcia (PN)
ITALY

Tel: (39) 0434 046211
numatic.it

Numatic International GMBH
Fränkische Straße 15-19,
30455 Hannover
DEUTSCHLAND

Tel: 05 11 98 42 16 0
numatic.de

Numatic International BV
Vennootsweg 15
2404 CG, Alphen aan den Rijn
NEDERLAND

Tel: 0172 467 999
numatic.nl

Numatic

©Numatic International Limited 2022.
Specification subject to change without prior notice.
PN: 911426 06/22 (A05)